



Caribbean Controls

Frequency Converter / Transposer

FOR USE WITH: Any Hammond Tonewheel Console.

KIT CONTENTS

- | | |
|--|---------------------------|
| 1 - FREQUENCY CONVERTER CHASSIS | 3 - WIRE NUTS (BLUE) |
| 4 - MOUNTING SCREWS (6 w xpose) | INSTALLATION INSTRUCTIONS |
| 1 - TRANSPOSER CONTROL HEAD (OPTIONAL) | |

INTRODUCTION

This kit contains our Frequency Converter Unit (and Transposer Control, if ordered). When properly installed to a Hammond tonewheel console, it provides regulation of the AC Mains line frequency and if ordered with the optional transposer control, the ability to transpose the entire organ.

CAUTION: Due to the presence of electrical potential, only an experienced technician should perform installation procedures or adjustments involving 110vac or 220vac "mains" power.

INSTALLATION

CAUTION: DISCONNECT ALL EQUIPMENT FROM POWER BEFORE PROCEEDING.

1. Remove the organ back and remove the Generator Line Panel cover to gain access to the AC mains connections.
2. Using the enclosed diagram, connect the adaptor harness to the Generator Line Panel.

NOTE: Most consoles will have only 5 wires between the Generator Line Panel and the Start/Run switches. On these organs, you will need to remove the jumper between the Start and Run switches, and install a new wire from the switches to the vicinity of the Generator Line Panel. This wire will then be attached to the orange wire of the harness you are installing.

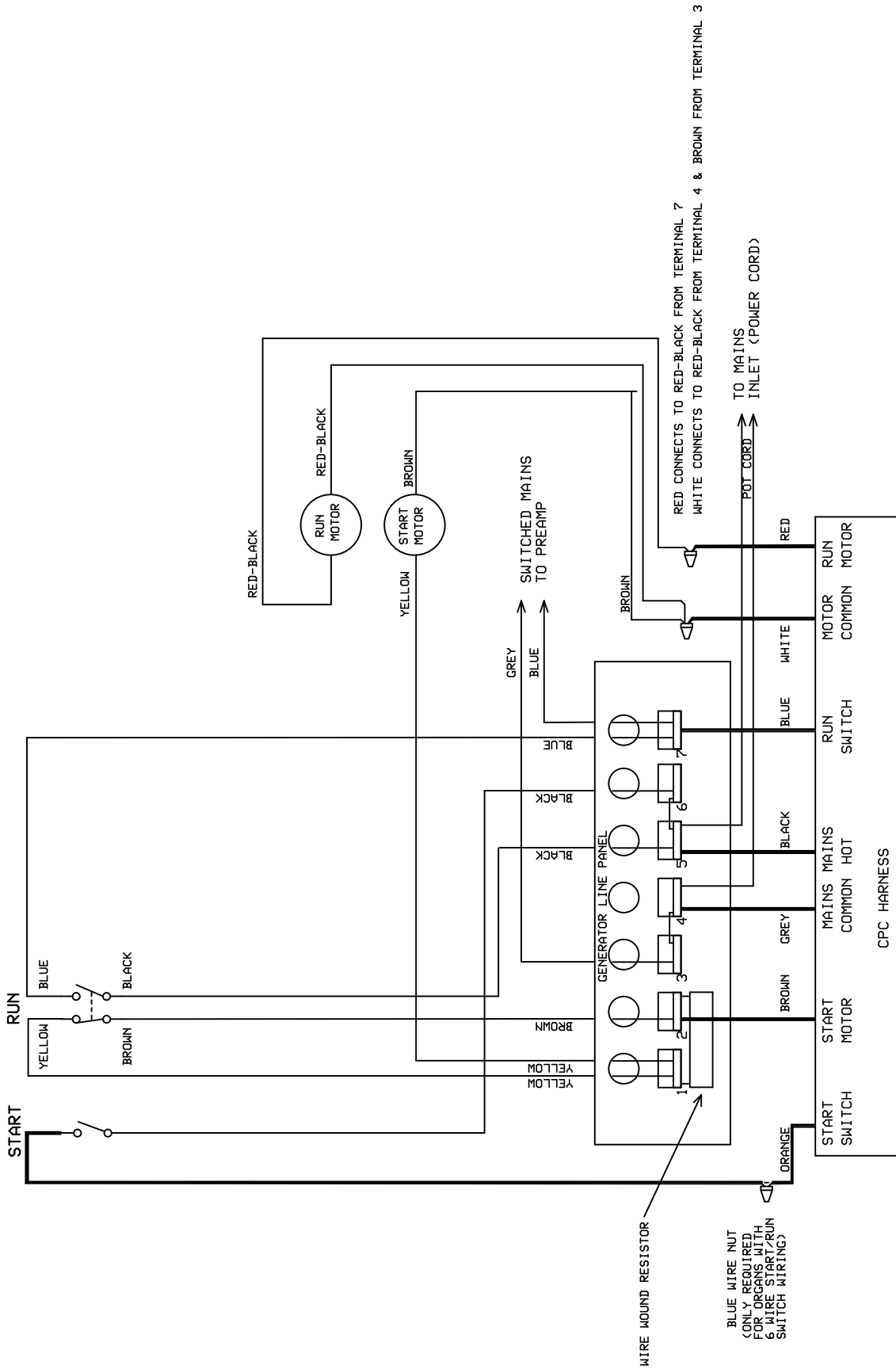
IMPORTANT: When using wire nuts be sure to hold the wire ends parallel and together but do not twist them. Insert these ends into the opening of the nut, pushing firmly and turning the nut in a clockwise direction until the connection is securely made.

3. Using the screws provided, secure the Frequency Converter Chassis to the shelf of the organ, at the treble end, behind the Generator Line Panel.
4. **OPTIONAL:** If you order the transposer option, continue on to the next step, if not skip to "FINAL CHECK AND ADJUSTMENT".
5. Using the screws provided, mount the transposer control head at the treble end of the organ, beneath the manual rail.
6. Raise the manuals, and pass the control cable back into the

- interior of the organ.
7. Connect the control cable plug to it's mating socket on the Frequency Converter Chassis

FINAL CHECK AND ADJUSTMENT

- ✿ Check all connections for proper hookup.
- ✿ Install the Bypass Plug. (CPC Plug with 3 jumper wires)
- ✿ Turn on the organ in the normal manner.
- ✿ If the organ started properly, then the harness is correctly installed.
- ✿ Remove the Bypass Plug; be sure to leave it in the organ.
- ✿ Plug in the Frequency Converter, and set the transpose control to "0", if so equipped
- ✿ Start the organ, noting that it will take a little longer for the generator to get up to full speed, before you can turn on the "Run" switch.
- ✿ Check the organ for proper pitch (A440).
- ✿ If equipped with the transposer control, check each position for proper transposition. BE SURE TO ALLOW THE GENERATOR TO "SETTLE" AT EACH STEP BEFORE SWITCHING TO THE NEXT.
- ✿ Reinstall all panels and covers removed during installation.



SPEAKEASY VINTAGE MUSIC

FREQ CONVERTER WIRING